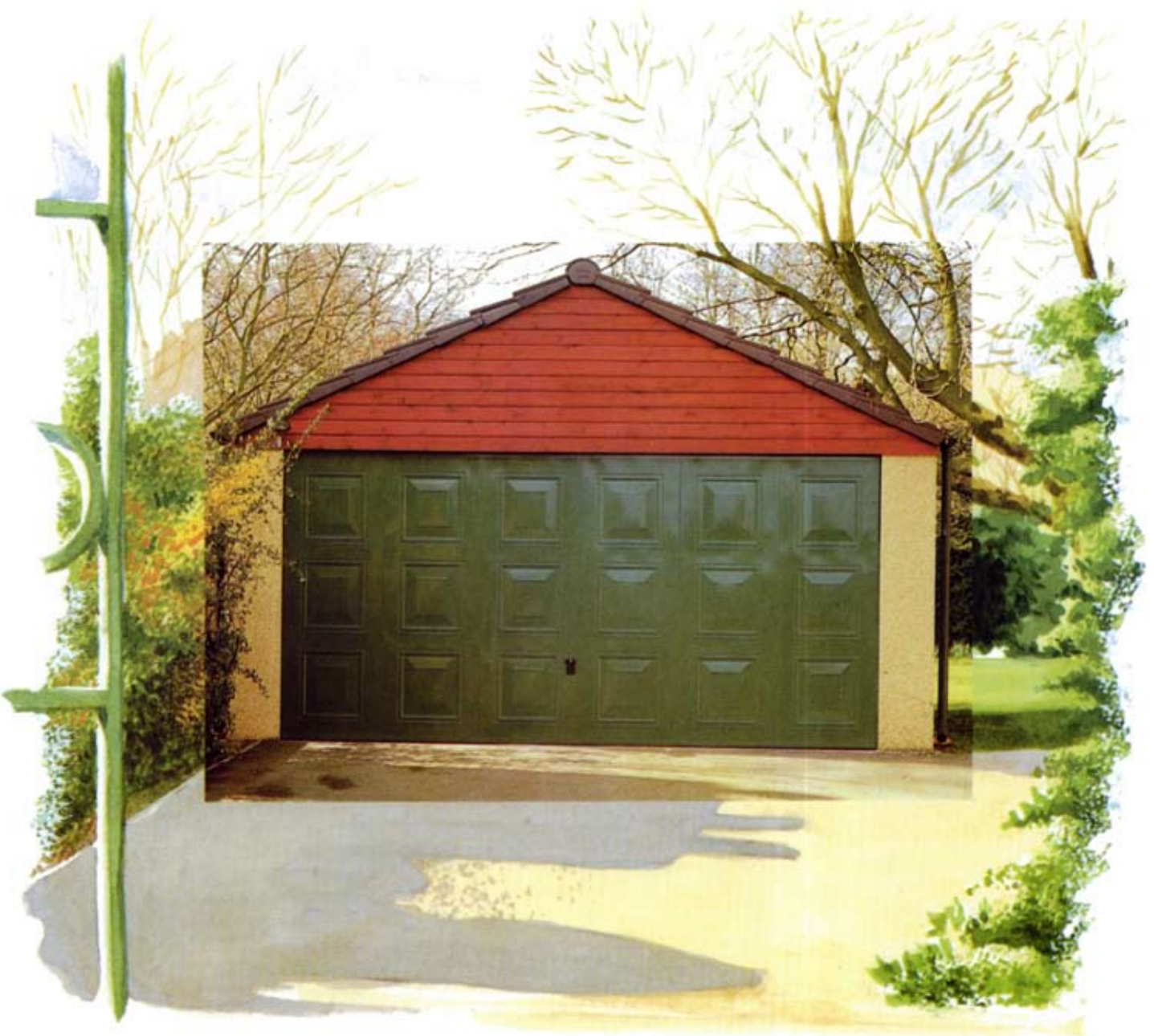


QUALITY BEYOND QUESTION



*MAYFAIR*

G A R A G E S

## QUALITY BEYOND QUESTION

As today's discerning homeowner you're not just looking for a weatherproof home for the car. You want a new workshop, a new utility room and activity space. You want a versatile home improvement of outstanding quality and appearance – a building that will not only meet exacting standards of performance and durability but will enhance the desirability of your home. Mayfair Garages have been developed from over 40 years experience in system build manufacturing.

A Mayfair Garage is better by choice. With a comprehensive selection of sizes, styles, doors, accessories and exterior finishes you're sure to find the model to suit every home, every taste and every pocket. A Mayfair

Garage is also better by design and we use only the finest materials – like quality aluminium windows and maintenance-free vinyl coated galvanised fascias. Who else pays such attention to detail in design, offering aggregate and textured finishes in no less than eleven different colours, plus a comprehensive range of traditional and modern roof tiles to harmonise with virtually every home.

But above all, a Mayfair Garage is a mark of quality. It's not just our pledge to use high quality materials with the latest computer-controlled manufacturing processes and thorough quality control systems. It's our commitment to maintaining the best customer service through our agents who can offer free help and advice with siting and planning requirements, and following prompt delivery to your home, provides quick, clean, skilled assembly by its construction teams.

After sales care completes the service provided, all of which is backed – of course - by the Mayfair Garage comprehensive guarantee.

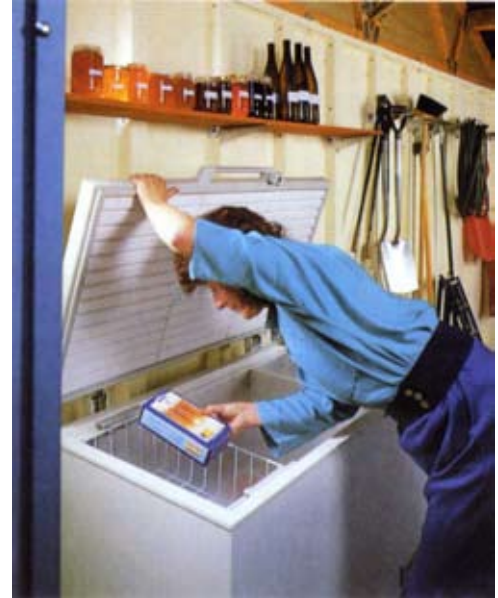


## A PRACTICAL INVESTMENT

A Mayfair Garage is a permanent investment – not only does it enhance the appearance and versatility of your home – but it actually increases its value.

It also protects another important investment – your car. A Mayfair Garage means quick, trouble-free starting on frosty mornings – an end to the nightmare of de-icers, scraped knuckles and frozen locks. It may also mean lower motor insurance premiums and naturally with the security of a Mayfair Garage you'll sleep soundly knowing your car is less vulnerable to vandalism and theft.

But a Mayfair Garage is much more than just a place to park the car. Think of it as a valuable extension to your home. There's safe storage for household and gardening equipment, plus welcome space for bicycles, freezers and tools. Plan ahead and buy big, and you'll have room to add a second car or workshop – or even perhaps that hobby room you've always wanted.



## A QUALITY GUARANTEED

Our continual investment in the latest manufacturing and quality control processes ensures the highest possible standards. All our garages are built and installed by trained construction teams and we are so confident of the quality of our range that each carries our comprehensive guarantee.



## THE QUALITY OF SERVICE



We appreciate you need more than just advice over which model to choose and nationwide network of sales agents have been appointed to provide a complete local service. They offer assistance in finding your way through the complexities of the planning and building and regulations and range of finance packages tailored to suit your individual needs. Our agents will help you with everything from the initial planning and preparation for your garage through its final construction. They'll research all the relevant building and site planning requirements for you and even provide site surveys and drawings where necessary.

## DISPLAY CENTRES

Due to the unrivalled range, selecting the right Mayfair Garage can be a difficult choice and we realise how important professional and expert advice can be. At your local Display Centre, the distributor or agent will offer that advice together with examples of our models. Should you prefer, a visit to your home by a professional adviser can be arranged.

40 years of experience in the garage market can be seen in the outstanding range and quality of our products and in sophisticated manufacturing processes that give superior strength and performance and our comprehensive choice of roof and wall finishes. The Mayfair Garage full height panel has no ugly bolts or clamping plates protruding into the valuable internal garage space. All fixing bolts are concealed from the outside, every panel joint is finished with sealant and covered with aggregate to give water resistance, and a uniform appearance. Whether you choose a modern or traditional, flat or pitched roof design, you can be sure the Mayfair Garage will complement your home and not compromise it. Our Windsor and Heritage models can be supplied with roof tiles to match virtually any existing tiled finish and you can specify from a choice of aggregate and applied textured finishes with the additional option of brick finish front-posts. Our insistence on only premium quality materials ensures your Mayfair Garage will be an attractive and also practical investment, with years of virtual maintenance-free service.



## DELIVERY/CONSTRUCTION



Mayfair Garages are manufactured at our specialist Systems Building plant and delivered to your home on our own vehicles. Each garage is designed for construction on a level concrete base – either laid by yourself to our specifications or, if you prefer, by one of our agent's specialist base-laying teams.

A nationwide construction service is also offered using specialist teams trained



# WINDSOR

RANGE

*The ultimate in garage design, blending traditional craftsmanship  
with the finest, low maintenance materials.*





COTSWOLD



SPARLITE



WHITESPAR



BUFF QUARTZ



BROWNSTONE



TEXTURED FINISH  
A choice of seven textured finishes

Ideally suited to enhancing the most prestigious properties, the Windsor with its deluxe features and elegant looks is equally at home in both picturesque rural villages and the most striking modern residential developments.

The handsome high specification tiled roof, built using traditional felt and battens, is complemented by the latest low maintenance Marley Dry Ridge and Dry Verge systems. Marley's top quality roof tiles – designed to harmonise with your home – are manufactured using the latest materials and processes, and guaranteed for a minimum life of 50 years. As befits a garage of this quality, the Windsor not only features a full range of Red Cedarwood, galvanised steel and Regency steel doors, but also includes optional extra wide door models for even easier access to your car. Naturally there's the choice of 'Marleybrick' front posts, and four aggregate, and textured finishes in a choice of seven colours. You can also specify your Windsor with full width internal partition wall to provide an ideal separate work area or storage space.

A full range of accessories and options are available for your Windsor garage. Please refer to the accessories section.

**Roof tiles**

Interlocking Marley concrete roof tiles - select the style, profile and colour from a comprehensive range of tiles to complement your home.

**Roof**

Maintenance-free Marley Dry Ridge and Dry Verge system. Traditionally constructed from felt and battens for improved weatherproofing and insulation.

**Gable End Trusses**

Pre-treated softwood front and rear gable end trusses can be stained or painted on site to complement

**Doors**

Unparalleled choice of garage doors, with extra wide doors available for easier access to your car.

**Brick front posts**  
'Marleybrick' front posts add and extra touch of elegance.

**Annexes**

All models can be provided with an annexe to provide a totally separate area for workshop or storage space

**Personal door**

Cedarwood part glazed or galvanized steel for easier access.

**Window**

Maintenance free white painted aluminium with opening fanlight as standard.

**Aggregate finish**

Four maintenance free aggregate finishes or optional textured coating in a choice of seven colours to blend with your property



W800  
Internal width 8'0" (2.438m)  
External width 8'7" (2.616m)



W904  
Internal width 9'4" (2.844m)  
External width 9'11" (3.022m)



W1008  
Internal width 10'8" (3.251m)  
External width 11'3" (3.429m)



W1008W  
Internal width 10'8" (3.251m)  
External width 11'3" (3.429m)



W1200  
Internal width 12'0" (3.657m)  
External width 12'7" (3.835m)



W1304  
Internal width 13'4" (4.063m)  
External width 13'11" (4.424m)



W1600  
Internal width 16'0" (4.877m)  
External width 16'7" (5.054m)

All models shown above are illustrative of our full range, please refer to specification tables for further options.

All models are available in length from 13'10" (4.216m) (external) and are extendable in multiples of 1'4" (406mm) to a maximum of 35'2" (10.718m) (deduct 6" (105mm) from these dimensions for internal length).

# WINDSOR 35

RANGE

*A single garage designed to harmonise with regional requirements  
with all the quality features of the Windsor range.*

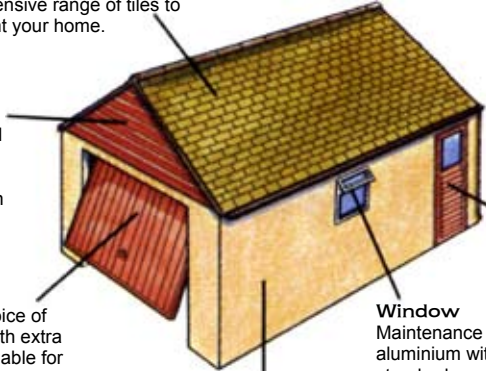


**Roof tiles**  
Interlocking Marley concrete roof tiles - select the style, profile and colour from a comprehensive range of tiles to complement your home.

**Annexes**  
All models can be provided with an annexe to provide a totally separate area for workshop or storage space

**Gable End Trusses**  
Pre-treated softwood front and rear gable end trusses can be stained or painted on site to complement your home.

**Doors**  
Unparalleled choice of garage doors, with extra width doors available for easier access to your car.



**Personal door**  
Cedarwood part glazed or galvanised steel for easier access.

**Window**  
Maintenance free white painted aluminium with opening fanlight as standard.

**Aggregate finish**  
Four maintenance free aggregate finishes or optional textured coating in a choice of seven colours to blend with your property



COTSWOLD



SPARLITE



WHITESPAR



BUFF QUARTZ



BROWNSTONE



TEXTURED FINISH

A choice of seven textured finishes

Designed to harmonise with existing buildings and local planning requirements the Windsor 35 utilizes the same high quality material from throughout the range of Marley Garages.

The handsome high specification tiled roof - built using traditional felt and battens - utilizes the range of Marley plain tiles with traditional local finish and textures. Marley's top-quality roof tiles - designed to complement your home - are manufactured using the latest material and processes, and guaranteed for a minimum life of 50 years.

As befits a garage of this quality, the Windsor 35 features the full range of Red Cedarwood, galvanised steel and Regency steel doors. Naturally there's the choice of 'Marleybrick' front posts, and four aggregate, and textured finishes in a choice of seven colours. You can also specify your Windsor 35 with a full width internal partition, an ideal separate work area or storage space.

A full range of accessories and options are available for your Windsor 35 garage. Please refer to the accessories section.



W35-800  
Internal width 8'0" (2.438m)  
External width 8'7" (2.616m)



W35-904  
Internal width 9'4" (2.844m)  
External width 9'11" (3.022m)



W35-1008  
Internal width 10'8" (3.251m)  
External width 11'3" (3.429m)



W35-1008W  
Internal width 10'8" (3.251m)  
External width 11'3" (3.429m)

All models shown above are illustrative of our full range, please refer to specification tables for further options.

All models are available in length from 13'10" (4.216m) (external) and are extendable in multiples of 1'4" (406mm) to a maximum of 35'2" (10.718m) (deduct 6" (105mm) from these dimensions for internal length).

# HERITAGE

RANGE

*Good looks and traditional features, yet subtly styled to complement both modern and mature properties.*





COTSWOLD



SPARLITE



WHITESPAR



BUFF QUARTZ



BROWNSTONE

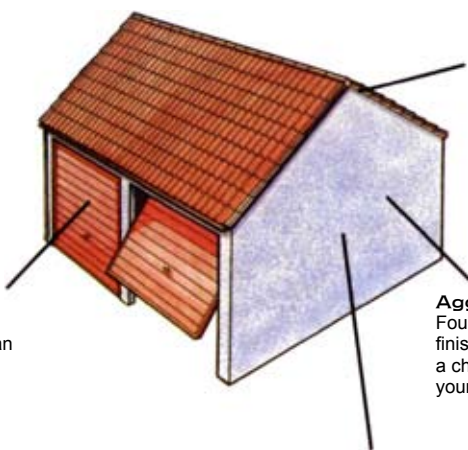


TEXTURED FINISH

A choice of seven textured finishes

**Twin Garages**  
Two sizes and a full height dividing wall make Heritage ideal for properties with a communal driveway

**Double Heritage**  
Deluxe model for the 2 car family features a clean central area without a partition wall and access



**Roof**  
Maintenance-free Marley Dry Ridge and Dry Verge system. Traditionally constructed from felt and battens for improved weatherproofing and insulation.

**Aggregate finish**  
Four maintenance free aggregate finishes or optional textured coating in a choice of seven colours to blend with your property

Pre-treated steel frame for maximum strength and durability.

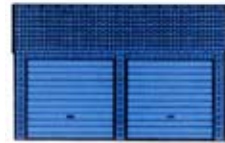
Using the Marley extensive range of top quality roof tiles means the Heritage is equally at home in both town and country. Its high specification traditional roof construction incorporates felt and timber battens for excellent weather and insulation performance. And with a 50 year roof tile guarantee and unique Dry Ridge and Dry Verge systems, you can be sure that your Heritage will give years of low maintenance service.

Two garages, in two sizes, make the Heritage ideal for the larger home. You can specify any Heritage Twin with a clear central area accessed by both doors, or an optional full height dividing wall. You can also choose 'Marleybrick' front posts to complement your brick-built home. And naturally there's the choice of four aggregate and seven coloured textured finishes, plus our range of Red Cedarwood, steel, and Regency steel up and over doors.

A full range of accessories and options are available for your Heritage garage. Please refer to the accessories section.



H800  
Internal width 8'0" (2.438m)  
External width 8'7" (2.616m)



H800 Twin  
Internal width 9'4" (2.844m) per bay  
External width 16'10" (5.130m)



H1603 Double  
Internal width 16'3" (4.953m)  
External width 16'10" (5.130m)



H904  
Internal width 9'4" (2.844m)  
External width 9'11" (3.022m)



H904 Twin  
Internal width 9'4" (2.844m)  
External width 9'11" (3.022m)



H1811 Double  
Internal width 18'11" (5.765m)  
External width 19'6" (5.943m)

All models shown above are illustrative of our full range, please refer to specification tables for further options.

All models are available in two lengths 16'8.5" (5.092m), 19'7" (5.969m) (deduct 6" (105mm) from these dimensions for internal length).

# REGENT

RANGE

*The value for money choice for those who want the benefits and attractive appearance of a traditional pitched roof, plus, of course, a full range of features and options.*



**Roof**  
Pre-treated steel rafters for maximum strength and long life covered by non-asbestos fibre cement roof sheets.

**Gable End Trusses**  
Pre-treated softwood front and rear gable end trusses can be stained or painted on site to complement your home.

**Annexes**  
All models can be provided with an annexe to provide a totally separate area for workshop or storage space

**Personal door**  
Cedarwood part glazed or galvanised steel for easier access.

**Doors**  
Unparalleled choice of garage doors, with extra width doors available for easier access to your car.

**Window**  
Maintenance free white painted aluminium with opening fanlight as standard.

**Aggregate finish**  
Four maintenance free aggregate finishes or optional textured coating in a choice of seven colours to blend with your property



COTSWOLD



SPARLITE



WHITESPAR



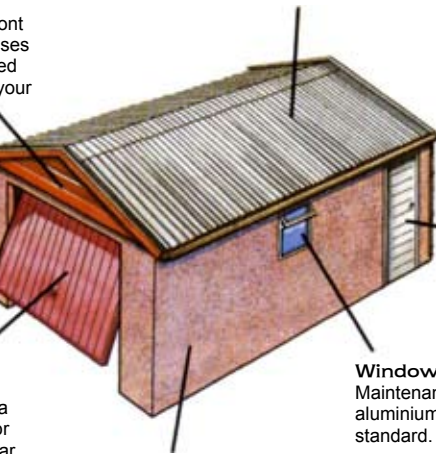
BUFF QUARTZ



BROWNSTONE



**TEXTURED FINISH**  
A choice of seven textured finishes



The Regent's pitched roof gives a 7' internal clearance – allowing valuable extra roof space – and the pre-treated softwood gable ends can be painted or stained to complement your home. Again there's the choice of aggregate and textured finishes in eleven colours, along with a huge range of width and length combinations, starting with compact sizes – ideal where space is at a premium. If driveway width is a problem you can order a Regent 800 with its additional length, allowing room for a number of cars parked end to end.

In addition, all Regents can be specified with 'Marleybrick' front posts as well as full-width internal partition wall to provide a separate work area and storage space.

A full range of accessories and options are available for your Regent garage. Please refer to the accessories section.



R800  
Internal width 8'0" (2.438m)  
External width 8'7" (2.616m)



R904  
Internal width 9'4" (2.844m)  
External width 9'11" (3.022m)



R1008  
Internal width 10'8" (3.251m)  
External width 11'3" (3.429m)



R1008W  
Internal width 10'8" (3.251m)  
External width 11'3" (3.429m)



R1200  
Internal width 12'0" (3.657m)  
External width 12'7" (3.835m)



R1304  
Internal width 13'4" (4.063m)  
External width 13'11" (4.424m)



R1600  
Internal width 16'0" (4.877m)  
External width 16'7" (5.054m)

All models shown above are illustrative of our full range, please refer to specification tables for further options.

All models are available in length from 13'10" (4.216m) (external) and are extendable in multiples of 1'4" (406mm) to a maximum of 35'2" (10.718m) (deduct 6" (105mm) from these dimensions for internal length).

# CLASSIC

RANGE

*The Classic offers unbeatable value for money and it's the ideal choice for those who prefer the flat-roofed style of garage.*





COTSWOLD



SPARLITE



WHITESPAR



BUFF QUARTZ



BROWNSTONE



TEXTURED FINISH  
A choice of seven textured finishes

Equally suited to both contemporary and older properties the Classic's full-height maintenance-free panels will harmonise with virtually any surroundings thanks to our comprehensive range of finishes. There's the choice of Cotswold, Sparlite, Whitespar, Buff Quartz & Brownstone coloured aggregate finishes, as well as the seven different coloured textured coatings. You can select brick finishes front posts on any model, and of course there's the quality range of both horizontal and vertical full-width Red Cedarwood, galvanised steel or Regency steel doors.

But quality doesn't stop here. Our unique panel design gives important extra headroom to incorporate a useful rear annexe. Our offset models are ideal if you need extra storage space, as well as offering easy access through the garage to the car. Where neighbours share a narrow driveway with limited access we can install an offset twin with the same advantages plus the benefits of shared cost. The Classic is available in a variety of standard lengths and widths, allowing for a vast choice of garage sizes. Other features include white-finished aluminium frames windows with opening fanlight. Please refer to the accessories section.

**Annexes**

All models except 1600 can be provided with an annexe to provide a totally separate area for workshop or storage space

**Personal door**

Cedarwood part glazed or galvanised steel for easier access.

**Roof**

Pre-treated steel rafters for maximum strength and and long life covered by non-asbestos fibre cement roof sheets.

**Classic**

Maintenance free vinyl coated galvanised steel fascias all round.

**Doors**

Unparalleled choice of garage doors, with extra width doors available for easier access to your car.

**Aggregate finish**

Four maintenance free aggregate finishes or optional textured coating in a choice of seven colours to blend with your property

**Window**

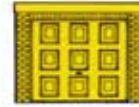
Maintenance free white painted aluminium with opening fanlight as standard.

All models are available in six lengths from 13'10" (4.216m), 15'2" (4.623m), 16'6" (5.029m), 17'10" (5.435m), 19'2" (5.842m) and 20'6" (6.248m) (deduct 6" (150mm) from these dimensions for internal length).

Annexe are all as per Classic garage. Lengths 4'3" (1.295m), 5'7" (1.702m), 6'11" (2.108m) and 8'3" (2.514m) external (deduct 3" (75mm) from these dimensions for internal length).



C800  
Internal width 8'0" (2.438m)  
External width 8'7" (2.616m)



C904  
Internal width 9'4" (2.844m)  
External width 9'11" (3.022m)



C904T  
Internal width 9'4" (2.844m) per bay  
External width 19'6" (5.943m)



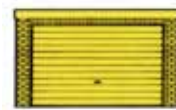
C1008  
Internal width 10'8" (3.251m)  
External width 11'3" (3.429m)



C1008WT  
Internal width 10'8" (3.251m) per bay  
External width 22'2" (6.756m)



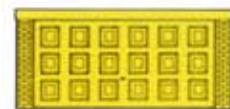
C1800W  
Internal width 10'8" (3.251m)  
External width 11'3" (3.429m)



C1200  
Internal width 12'0" (3.657m)  
External width 11'03" (3.835m)



C1304  
Internal width 13'4" (4.063m)  
External width 13'11" (4.242m)



W1600  
Internal width 16'0" (4.877m)  
External width 16'7" (5.054m)

All models shown above are illustrative of our full range, please refer to specification tables for further options.

## ACCESSORIES

Need extra storage space, an extra personal door or an added choice of finishes? The Mayfair Garage range of accessories lets you tailor your garage to meet your specific needs. (See specification section for technical details and sizes.) Please refer to specification tables for model availability.



### ANNEXE

A quality, high specification annexe isn't just the answer to all your storage problems. A Mayfair's Annexe can be a playroom, a workshop, a garden tool store or simply somewhere to put the freezer. All Mayfair Annexes are constructed from the same high-specification panels, fascias and roof sheeting as our garages and include a galvanised personal door and aluminium framed window as standard. On Windsor and Regent models an internal partition wall can be supplied to form an annexe and is supplied complete with galvanised personal door.

### BRICK FRONT POSTS

'Marleybrick' hand-applied natural stone finish is available on all models and gives your garage a brick-finished frontage to blend with your home.



### GARAGE DOORS

Manufactured from high grade materials for that quality appearance and long trouble-free service, all doors are well proven and easy to operate. Available in five different styles and a range of four sizes. All doors are framed and braced with galvanised steel for maximum strength and durability and all are supplied complete with locking handle, two keys and internal opening handle.



GALVASTEEL HORIZONTAL



GALVASTEEL VERTICAL



GALVASTEEL REGENCY



CEDAR HORIZONTAL



CEDAR VERTICAL

### TEXTURED WEATHER COATING

Available on all garages this optional finish gives an attractive 'rendered' finish designed to harmonise with your home. Available in a choice of seven colours - white, magnolia, cream, brown, brick-red, slate grey and light stone.



WHITE



MAGNOLIA



CREAM



BROWN



BRICK RED



SLATE GREY



LIGHT STONE



#### PERSONAL DOORS

Allowing easy access to either side or rear elevations of your garage, these are available in a choice of rotproof part-glazed Western Red Cedar or ready primed galvanised steel. Steel doors are available in three widths to facilitate access for even the largest domestic lawn mower.

#### FRAMED OPENINGS

Two sizes of galvanised steel framed openings are available for give access where a door is not required.

#### WINDOWS

All garage and annexe windows are manufactured from high-specification aluminium with a white polyester-painted finish for maximum durability and minimal maintenance. All windows include a full-width opening fanlight at no extra cost and are gasket glazed prior to delivery – no putty to crack and maintain.



#### GUTTERING

Maintenance-free 112mm black vinyl gutters complete with 68mm downpipes and fixings can be specified on all models to channel rainwater into tubs or soakaways. Winsor/Regent gutter on flank walls, Heritage at front and rear, Classic gutter at rear, Classic "F" and Annexe, gutter front and rear.



#### TRANSLUCENT ROOF SHEETS

Are ideal for those working areas where added daylight is required. Supplied on Classic and Regent ranges.

#### LINING CLIPS

Galvanised lining clips allow a batten to be fixed to the panel, providing a ground for lining or fixing a base for light switches, electrical sockets and tool racks etc..



#### SHELF BRACKETS

Shelf brackets dramatically increase the usefulness of your garage by maximising storage space. Galvanised steel brackets can be used both as hangers or shelf supports and can carry shelving up to 200mm in width.

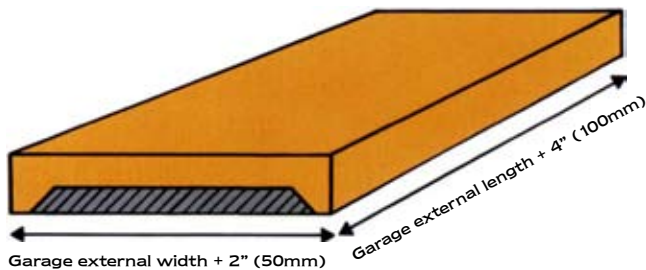


## SPECIFICATIONS

### FOUNDATIONS

Mayfair Garages are designed for construction on a level concrete base measuring 4" (100mm) longer and 2" (50mm) wider than the external dimensions of the garage. The depth of the slab should comply with local Authority requirements and your local distributor will advise you on all necessary site preparations.

### CROSS SECTION OF TYPICAL GARAGE BASE



Special base details available for Heritage garages, please consult your distributor for details.

### WALLS

7'0" (2.122m) high precast concrete panels finished in natural stone aggregate and reinforced with steel manufactured to British standard 449. Panels interlock and are bolted together with rust resistance fixings. All external joints are sealed with mastic and finished with aggregate and all external bolt heads are concealed.

All Mayfair Garage panels are non-combustible and meet the half-hour structural integrity and flame penetration requirements of British Standard 476. 'Marleybrick' is a hand-applied natural stone finish.



### TEXTURED FINISH

A heavy-duty surface coating providing a textured protective finish. Textured finish is available in seven colours and is applied on site.

### ROOFS

All roofs have an AA fire rating and all structural steel designs meet British Standard 449.

#### Flat Roof Garages:

6" corrugated fibre cement sheeting supported by galvanised cold-rolled steel rafters and fixed with BZP rust resistant hook bolts. The roof is finished with maintenance-free vinyl-coated galvanised steel flashings.

#### PITCHED ROOF GARAGES

Steel rafters, formed from welded rectangular hollow section steel (RHS) to British Standard 6363, support structural grade preservative-treated timber perkins which carry 6" corrugated fibre cement roof sheeting to relevant British Standard.

### TILED ROOF GARAGES

Dependant on model, either: structural grade, preservative treated timber roof trusses carrying felt, battens and a comprehensive range of Marley plain or interlocking roof tiles; or, steel rafters, formed from RHS steel to British Standard 6363, support structural grade preservative treated timber perkins which carry complementary rafters, felt, battens and a comprehensive range of Marley plain or interlocking roof tiles.

Marley concrete tiles carry a 50 year guarantee and are available in a choice of types, profiles and colours.

Marley maintenance-free Dry Verge and Dry Ridge systems are available on most Windsor and Heritage models.

Gable end trusses are manufactured from preservative-treated structural grade softwood and clad in pre-treated softwood shiplap boarding to accept a paint or stain to match your property.

### DOORS

#### Up and over doors

A choice from the range of high quality tongued and grooved Western Red Cedarwood (untreated), horizontal or vertical profile or ready primed galvanised steel in either horizontal, vertical or Regency profile.

It is recommended that Cedar doors are treated with a proprietary brand of dressings following installation, and that galvanised doors, whilst primed and rust resistant are best painted for the ideal finish.

All doors are framed and braced with galvanised steel for greater strength.

Up and over doors use track and coil spring operating gear (featuring nylon rollers in galvanised steel tracks) and in most models the door is housed complexly within the garage when open.

All up and over doors are supplied complete with locking handle, two keys and internal opening handle.

A Galvasteel horizontal or vertical profile door is supplied as standard, for available door sizes with clear opening sizes please refer to the relevant specification table.

#### PERSONAL DOORS

All doors left hand hung and open out. There are two main types:

- 1) Western Red Cedarwood part glazed door, framed, ledged and braced and clad with shiplap boarding. Supplied complete with glass, lock two keys and handle and measuring 2'8" (813mm) wide, 6'6" (1981mm) high, overall the frame.
- 2) Galvanised steel doors – horizontally swaged, complete with frame, lock and two keys, handle and supplied ready-primed and available in 3 widths, 2'8" (813mm) 4'0" (1219mm) and 5'4" (1626mm), 6'6" (1981mm) high, overall the frame.

#### FRAMED OPENINGS

Ready primed galvanised steel frames give two width openings, 2'8" (813mm) and 4'0" (1219mm), 6'6" (1981mm) high, overall the frame.

#### WINDOWS

Aluminium-framed to British Standard 1474 with a white polyester paint finish, incorporating a full-width opening fanlight as standard. Gasket glazed prior to delivery. 2'8" (813mm) x 2'9 1/2" (851mm) overall.

#### GUTTERING

Black vinyl 112mm half-round gutters and 68mm downpipes complete with all necessary fixings.

See specification tables for model availability.

#### TRANSLUCENT ROOF SHEETS

Manufactured from GRP, these 6" profile sheets are available on all Classic and Regent models.

#### SHELF BRACKETS

Galvanised steel brackets, fixed to concrete panels with existing panel bolts, supplied in packs of six.

#### LINING CLIPS

Galvanised steel batten clips, to facilitate the fixing of timber battening (not provided)

## SPECIFICATION TABLES

Once you have decided what size and type of garage would suit your needs you can use the following tables to specify the exact Mayfair Garage to fulfil them.

The tables are colour coded to tie in with the garage styles displayed in the brochure.

At the top left hand corner of each table a code showing the details of door widths is given. Select the correct width then view down the first column to find a suitable garage. E.g. if you require a standard door width in the Classic style go to the yellow table and look for codes carrying an S suffix.

By reading across the columns you are now able to discover which accessories are available and if they are fitted as standard or are optional.

KEY	MAIN DOOR										P.DOOR			ROOF											
	Wide Post L or R	Aggregate Finish	Textured Finish	Marleybrick to Front	Galvasteel Horizontal	Galvasteel Vertical	Galvasteel Regency	Cedar Horizontal	Cedar Vertical	Window	Galvanised steel 2'8" wide	Galvanised steel 4'0" wide	Galvanised steel 5'4" wide	Cedar 2'8" wide	Framed Opening 2'8" or 4'0" wide	Plain Tiles	Interlocking Tiles	Fibre Cement	Translucent Rooflight	Shelf Brackets/Lining Clips	Garage Paint	Guttering	Alternative as a Building Less than 30m2	Full Height Partition Wall	
WINDSOR 25° pitch	800S	●	■	■	●	●	■	■	■	●	■	■	■	■	■	●				■	■	■	■	■	
	904S		●	■	■	●	●	■	■	■	●	■	■	■	■	■	●				■	■	■	■	■
	904S(O)	●	●	■	■	●	●	■	■	■	●	■	■	■	■	■	●				■	■	■	■	■
	904E		●	■	■	●				●	■	■	■	■	■	■	●				■	■	■	■	■
	1008S		●	■	■	●		■	■	■	●	■	■	■	■	■	●				■	■	■	■	■
	1008W		●	■	■	●				■	●	■	■	■	■	■	●				■	■	■	■	■
	1008E		●	■	■	●				●	■	■	■	■	■	■	●				■	■	■	■	■
	1008E(O)	●	●	■	■	●				●	■	■	■	■	■	■	●				■	■	■	■	■
	1200E		●	■	■	●				●	■	■	■	■	■	■	●				■	■	■	■	■
	1200W		●	■	■	●				■	●	■	■	■	■	■	●				■	■	■	■	■
	1200W(O)	●	●	■	■	●				■	●	■	■	■	■	■	●				■	■	■	■	■
	1304W		●	■	■	●				■	●	■	■	■	■	■	●				■	■	■	■	■
	1600D		●	■	■	●	●	■		■	●	■	■	■	■	■	●				■	■	■	■	■
WINDSOR 35° pitch	35-800S		●	■	■	●	●	■	■	■	●	■	■	■	■	●				■	■	■	■	■	
	35-904S		●	■	■	●	●	■	■	■	●	■	■	■	■	■	●				■	■	■	■	
	35-904S(O)	●	●	■	■	●	●	■	■	■	●	■	■	■	■	■	●				■	■	■	■	
	35-904E		●	■	■	●				●	■	■	■	■	■	■	●				■	■	■	■	
	35-1008S		●	■	■	●	●	■	■	■	●	■	■	■	■	■	●				■	■	■	■	
	35-1008W		●	■	■	●				■	●	■	■	■	■	■	●				■	■	■	■	
	35-1008E		●	■	■	●				●	■	■	■	■	■	■	●				■	■	■	■	
	35-1008E(O)	●	●	■	■	●				●	■	■	■	■	■	■	●				■	■	■	■	

**KEY**

- Included as standard
- Optional

- S Standard Door 7'6" x 6'6" (Door opening clear size 7'2" x 6'3")
- E Extra Width Standard Door 8'10" x 6'6" (Door opening clear size 8'6" x 6'3")
- W Wide Door 10'2" x 6'6" (Door opening clear size 9'10" x 6'3")
- D Double Door 14'0" x 7'0" (Door opening clear size 13'7" x 6'6")
- (O) Offset Front Post

	Wide Post L or R	Aggregate Finish	Textured Finish	Marleybrick to Front	MAIN DOOR				P.DOOR				ROOF				Alternative as a Building Less than 30m2	Full Height Partition Wall					
				Galvasteel Horizontal	Galvasteel Vertical	Galvasteel Regency	Cedar Horizontal	Cedar Vertical	Window	Galvanised steel 2'8" wide	Galvanised steel 4'0" wide	Galvanised steel 5'4" wide	Cedar 2'8" wide	Framed Opening 2'8" or 4'0" wide	Plain Tiles	Interlocking Tiles	Fibre Cement	Translucent Rooflight	Shelf Brackets/Lining Clips	Garage Paint	Guttering		

HERITAGE 30° pitch transverse ridge	800S	●	■	■	●	●	■	■	■	●	■	■	■	■	■	●	■	■	■	■	■	●	■	■
	800S Twin	●	■	■	●	●	■	■	■	●	■	■	■	■	■	●	■	■	■	■	■	●	■	■
	904S	●	■	■	●	●	■	■	■	●	■	■	■	■	■	●	■	■	■	■	■	●	■	■
	904S(O)	●	●	■	●	●	■	■	■	●	■	■	■	■	■	●	■	■	■	■	■	●	■	■
	904S Twin	●	■	■	●	●	■	■	■	●	■	■	■	■	■	●	■	■	■	■	■	●	■	■
	904S Twin(O)	●	●	■	●	●	■	■	■	●	■	■	■	■	■	●	■	■	■	■	■	●	■	■
	904E	●	■	■	●					●	■	■	■	■	■	●	■	■	■	■	■	●	■	■
	904E Twin	●	■	■	●					●	■	■	■	■	■	●	■	■	■	■	■	●	■	■
	1603S Double	●	■	■	●	●	■	■	■	●	■	■	■	■	■	●	■	■	■	■	■	●	■	■
	1811S Double	●	■	■	●	●	■	■	■	●	■	■	■	■	■	●	■	■	■	■	■	●	■	■
	1811S Double (O)	●	■	■	●	●	■	■	■	●	■	■	■	■	■	●	■	■	■	■	■	●	■	■
	1811E Double(O)	●	●	■	●					●	■	■	■	■	■	●	■	■	■	■	■	●	■	■

REGENT 15° pitch	800S	●	■	■	●	●	■	■	■	●	■	■	■	■	■	●	■	■	■	■	■	●	■	■
	904S	●	■	■	●	●	■	■	■	●	■	■	■	■	■	●	■	■	■	■	■	●	■	■
	904S(O)	●	●	■	●	●	■	■	■	●	■	■	■	■	■	●	■	■	■	■	■	●	■	■
	904E	●	■	■	●					●	■	■	■	■	■	●	■	■	■	■	■	●	■	■
	1008S	●	■	■	●	●	■	■	■	●	■	■	■	■	■	●	■	■	■	■	■	●	■	■
	1008W	●	■	■	●					●	■	■	■	■	■	●	■	■	■	■	■	●	■	■
	1008E	●	■	■	●					●	■	■	■	■	■	●	■	■	■	■	■	●	■	■
	1008E (O)	●	●	■	●					●	■	■	■	■	■	●	■	■	■	■	■	●	■	■
	1200W	●	■	■	●					●	■	■	■	■	■	●	■	■	■	■	■	●	■	■
	1200W (O)	●	●	■	●					●	■	■	■	■	■	●	■	■	■	■	■	●	■	■
	1200E	●	■	■	●					●	■	■	■	■	■	●	■	■	■	■	■	●	■	■
	1304W	●	■	■	●					●	■	■	■	■	■	●	■	■	■	■	■	●	■	■
	1600D	●	■	■	●	●	■	■	■	●	■	■	■	■	■	●	■	■	■	■	■	●	■	■

CLASSIC 2° slope to rear	800S	●	■	■	●	●	■	■	■	●	■	■	■	■	■	●	■	■	■	■	■	●	■	■
	800S Twin	●	■	■	●	●	■	■	■	●	■	■	■	■	■	●	■	■	■	■	■	●	■	■
	904S	●	■	■	●	●	■	■	■	●	■	■	■	■	■	●	■	■	■	■	■	●	■	■
	904S(O)	●	●	■	●	●	■	■	■	●	■	■	■	■	■	●	■	■	■	■	■	●	■	■
	904S Twin	●	■	■	●	●	■	■	■	●	■	■	■	■	■	●	■	■	■	■	■	●	■	■
	904S Twin(O)	●	●	■	●	●	■	■	■	●	■	■	■	■	■	●	■	■	■	■	■	●	■	■
	904E	●	■	■	●					●	■	■	■	■	■	●	■	■	■	■	■	●	■	■
	904E Twin	●	■	■	●					●	■	■	■	■	■	●	■	■	■	■	■	●	■	■

KEY		MAIN DOOR										P.DOOR				ROOF								
		Wide Post L or R	Aggregate Finish	Textured Finish	Marleybrick to Front	Galvasteel Horizontal	Galvasteel Vertical	Galvasteel Regency	Cedar Horizontal	Cedar Vertical	Window	Galvanised steel 2'8" wide	Galvanised steel 4'0" wide	Galvanised steel 5'4" wide	Cedar 2'8" wide	Framed Opening 2'8" or 4'0" wide	Plain Tiles	Interlocking Tiles	Fibre Cement	Translucent Rooflight	Shelf Brackets/Lining Clips	Garage Paint	Guttering	Alternative as a Building Less than 30m2
CLASSIC 2° slope to rear	1008S	●	■	■	●	●	■	■	■	●	■	■	■	■				●	■	■	■	■	■	■
	1008E		●	■	■	●				●	■	■	■	■				●	■	■	■	■	■	■
	1008E (O)	●	●	■	■	●				●	■	■	■	■				●	■	■	■	■	■	■
	1008E Twin		●	■	■	●				●	■	■	■	■	■	■		●	■	■	■	■	■	■
	1008E Twin(O)	●	●	■	■	●				●	■	■	■	■	■	■		●	■	■	■	■	■	■
	1008W		●	■	■	●				■	●	■	■	■	■			●	■	■	■	■	■	■
	1008W Twin		●	■	■	●				■	●	■	■	■	■	■		●	■	■	■	■	■	■
	1200E		●	■	■	●				●	■	■	■	■	■			●	■	■	■	■	■	■
	1200W		●	■	■	●				■	●	■	■	■	■	■		●	■	■	■	■	■	■
	1200W Twin		●	■	■	●				■	●	■	■	■	■	■		●	■	■	■	■	■	■
	1200W(O)	●	●	■	■	●				■	●	■	■	■	■	■		●	■	■	■	■	■	■
	1200W Twin(O)	●	●	■	■	●				■	●	■	■	■	■	■		●	■	■	■	■	■	■
	1304W		●	■	■	●				■	●	■	■	■	■	■		●	■	■	■	■	■	■
	1600D		●	■	■	●	●	■		■	●	■	■	■	■	■		●	■	■	■	■	■	■

CLASSIC 'F' WITH 2° SLOPE TO FRONT - Offers the same models and specifications as the Classic range and must be specified if an annexe is required. (see annexe specifications below).

THE 1600D MODEL IS UNAVAILABLE IN THE CLASSIC 'F' SERIES

ANNEXE 2° slope to rear	800	●	■						●	●	■	■	■	■			●	■	■	■	■	■	■
	800Twin	●	■						●	●	■	■	■	■			●	■	■	■	■	■	■
	904	●	■						●	●	■	■	■	■			●	■	■	■	■	■	■
	904 Twin	●	■						●	●	■	■	■	■			●	■	■	■	■	■	■
	1008	●	■						●	●	■	■	■	■			●	■	■	■	■	■	■
	1008 Twin	●	■						●	●	■	■	■	■			●	■	■	■	■	■	■
	1200	●	■						●	●	■	■	■	■			●	■	■	■	■	■	■
	1200 Twin	●	■						●	●	■	■	■	■			●	■	■	■	■	■	■
1304	●	■						●	●	■	■	■	■			●	■	■	■	■	■	■	

## ADDITIONAL SPECIFICATION REQUIREMENTS

As well as the above specifications we offer all customers a number of variations to help cater for very specific requirements. The Windsor, Regent and Classic 1600D models can be fitted with an S type up and over door in the rear wall creating a drive through garage.

Twin garages in the Heritage and Classic ranges can be supplied with a single up and over door with the other door replaced with panels to provide a workshop.

Twin garages of mixed sizes can be constructed to suit two different size cars.

These are typical examples of the greater flexibility of the Mayfair Garage range which allows customers to tailor their garage design to meet their needs.

If you have a requirement that is not shown in this brochure, your local distributor will be more than happy to listen to your request and suggest a suitable solution, where practicable.



## SATISFACTION GUARANTEED

With over 40 years experience manufacturing garages and a nationwide network of agents, Mayfair Garage's after sales service is second to none. We are also happy - wherever possible - to extend or adapt an existing Mayfair Garage to suit your future needs.





Compare the Mayfair Garage specifications with other makes of garage. Look at our range of sizes, designs and styles. Look at our choice of doors, accessories and exterior finishes. Nobody beats us for choice, quality and value for money.

With so much to choose from we appreciate that making your mind up won't be easy. That's why the Mayfair Garage agents and home advisors are readily available so you can get expert help and advice on choosing your garage and see the quality for yourself.

## OTHER PRODUCTS

Leofric Building Systems Ltd are major suppliers of high quality buildings for industry, commerce and leisure and our customers include some of the best-known companies in Britain as well as sporting organisations, scout clubs, local authorities and government departments. They have found that when it comes to value for money, quality and speed, LBS is number one.

## THANK YOU CUSTOMERS

We at Mayfair Garages also wish to thank all our customers for their kind co-operation and consideration shown during the production of this brochure.

QUALITY BEYOND QUESTION



**Mayfair Garages  
Leofric Building Systems Ltd**

Hillside House, Stratford Road, Mickleton, Nr. Chipping Campden, Glos GL55 6SR

Tel: 01386 430 121 Fax: 01386 438 135

Email: [sales@leofricbuildings.co.uk](mailto:sales@leofricbuildings.co.uk) Website: [www.garages-sheds.co.uk](http://www.garages-sheds.co.uk)